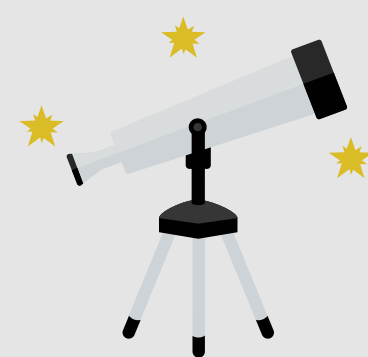




# Disability Health Network Focus of Influence 2021 - 2022

## Vision

An inclusive Western Australian health system that empowers people with disability to enjoy the highest attainable standard of health and wellbeing throughout their life

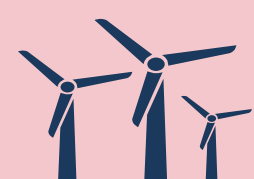
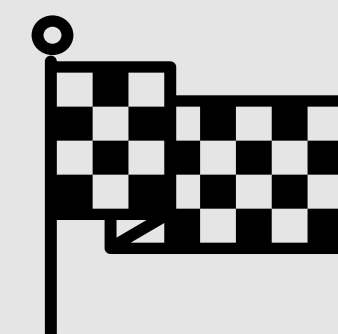


## Purpose

Provide direction to the WA health system and its partners on policy development and service delivery to achieve improved health outcomes for people with disability  
Contribute to the Sustainable Health Review

## Goals

- Recognise the right to effective services and care for people with disability
- Foster a broader understanding of the health needs of people with disability
- Improve the quality, accessibility, inclusiveness and coordination of services necessary to meet the health needs of people with disability



## Sustainable Health Review

### Strategy 1

Commit and collaborate to address major public health issues

#### Recommendation 3

Reduce inequity in health outcomes and access to care with focus on :

- c) People living in low socioeconomic conditions

#### State Disability Strategy Action Plan

- Oral Health
- Ready To Go Home
- Inclusive Health Care

WAPHA Health Pathways - Disability Pathway  
International Day of People with Disability 2021  
WA Disability Health Framework 2015-2025  
Accessible Resources e.g. Plain English



### Strategy 4

Person-centred, equitable, seamless access

#### Recommendation 13

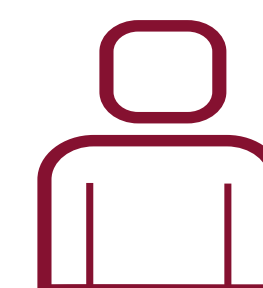
Implement models of care in the community for groups of people with complex conditions who are frequent presenters to hospital

#### Care Coordination

#### Recommendation 15

Improve the interface between health, aged care and disability services to enable care in the most appropriate setting and to ensure people do not fall between the gaps

Making the Link Project  
Ready To Go Home  
NDIS Health Community of Practice



### Strategy 6

Invest in digital healthcare and use data wisely

#### Recommendation 21

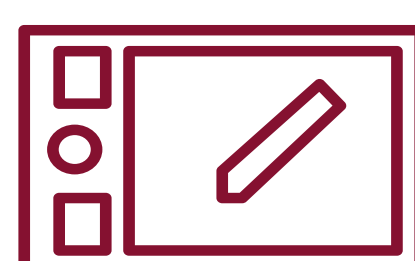
Invest in analytical capability and transparent, real-time reporting across the system to ensure timely and targeted information to drive safety and quality, to support decision making for high value healthcare and innovation, and to support patient choice

#### Data use and linkage Research - Health Service use

#### Recommendation 22

Invest in a phased 10-year digitisation of the WA Health system to empower citizens with greater health information, to enable access to innovative, safe and efficient services: and to improve, promote and protect the health of Western Australians

My Health Record  
Health Passport



### Strategy 7

Culture and workforce to support new models of care

#### Recommendation 26

Build capability in workforce planning and formally partner with universities, vocational training institutes and professional colleges to shape the skills and curriculum to develop the health and social care workforce of the future

#### Shared attitudes and behaviours in health care: a core capabilities resource for disability health

#### Recommendation 27

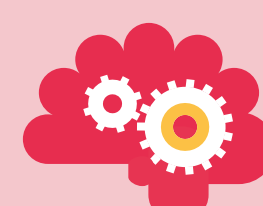
Remove barriers to equity, flexibility and transparency in workforce arrangements

DAIP Chairs + Champions Online Forum  
- DAIP Outcome 7



## Priorities

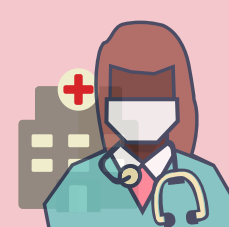
Understanding and recognition



Health and wellbeing



Workforce capability



Inclusive healthcare

